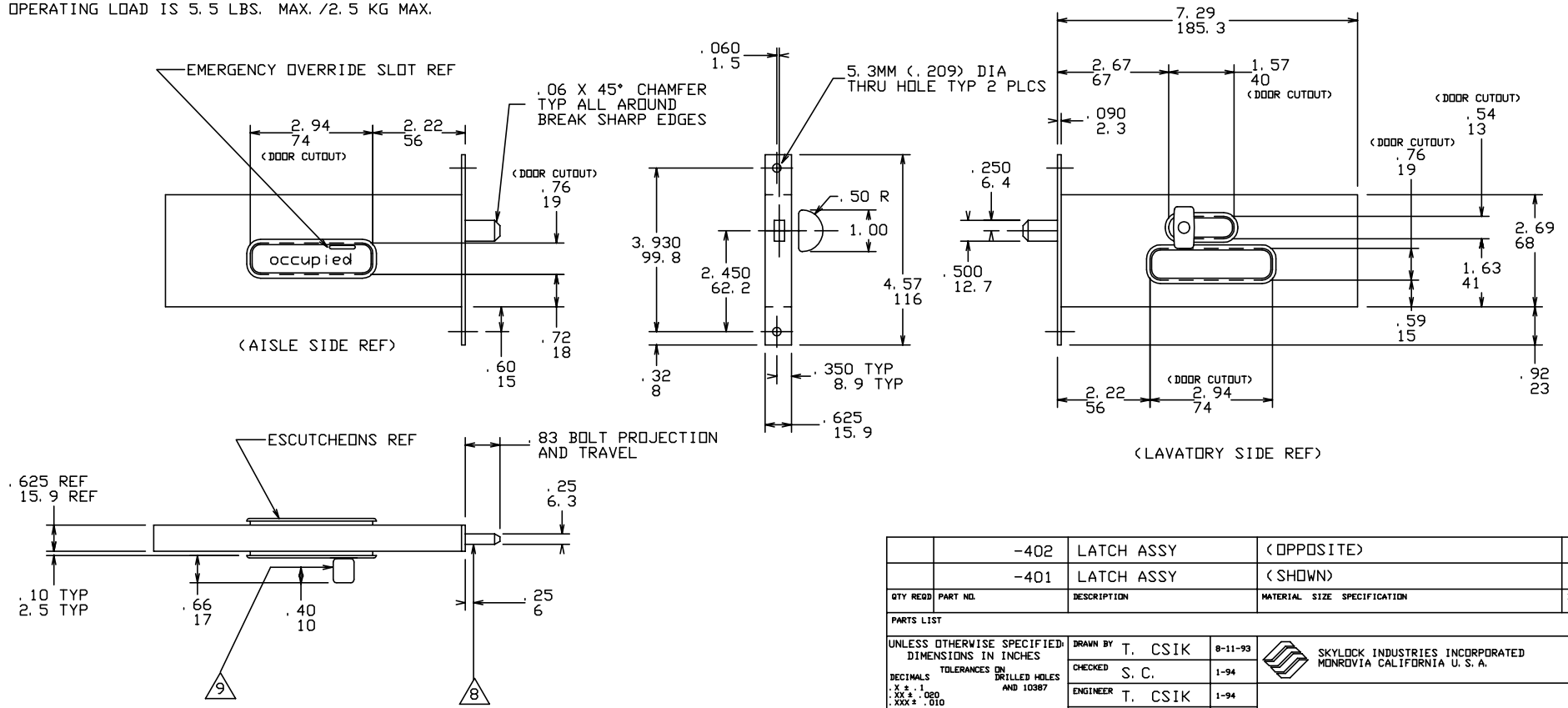


THE INFORMATION AND DESIGN HEREIN WAS ORIGINATED BY AND IS THE PROPERTY OF SKYLOCK INDUSTRIES INCORPORATED. SKYLOCK INDUSTRIES INCORPORATED RESERVES ALL PATENT, PROPRIETARY, DESIGN MANUFACTURING, REPRODUCTION, USE AND SALES RIGHTS THERE TO, AND TO ANY ARTICLE DISCLOSED THEREIN EXCEPT TO THE EXTENT RIGHTS ARE EXPRESSLY GRANTED TO OTHERS. THE FOREGOING DOES NOT APPLY TO VENDOR PROPRIETARY PARTS.

REVISIONS				
ZONE	LTR	DESCRIPTION	DATE	APPROVED
	NC	PRODUCTION RELEASE	10-19-93	T. CSIK
	A	DIM. 7.29/185.3 WAS 7.20/183	11-10-93	T. CSIK
	B	REVISED ACTUATOR KNOB PER CUST. REQUEST	6-1-94	T. CSIK

NOTES: UNLESS OTHERWISE SPECIFIED.

- MATERIAL: CASE ASSY, ACTUATOR KNOB, ESCUTCHEONS - ALUM. ALLOY.; INDICATOR SIGN AND WINDOW - WHITE DELRIN; BOLT AND ALL OTHER COMPONENTS - CRES.
  - DECORATIVE FINISH: ALL VISIBLE METAL SURFACES - SATIN BUFF.
  - PROTECTIVE FINISH: ALUM. - CLEAR ANODIZE; CRES - PASSIVATE.
  - INDICATOR SIGN: LETTERING TO BE CENTERED IN WINDOW, LETTERING STYLE - HELVETICA BOLD, LOWER CASE; LETTERING COLOR - BLACK, UNLESS OTHERWISE SPECIFIED; LETTERING SIZE - .25" HIGH.
  - LATCH IS SPRING BIASED TO THE EXTENDED OR RETRACTED POSITIONS.
  - LIGHT FROM LAVATORY SIDE ILLUMINATES INDICATOR SIGN THRU TRANSLUCENT WINDOW.
  - LATCH OPERATION: LAVATORY SIDE ACTUATOR KNOB EXTENDS AND RETRACTS BOLT. INDICATOR SIGN READS "LAVATORY" WHEN BOLT IS RETRACTED, AND "OCCUPIED" WHEN BOLT IS EXTENDED. FOR EMERGENCY ACCESS FROM AISLE SIDE, PLACE SMALL OBJECT IN SLOT IN INDICATOR SIGN AND LOWER SIGN TO RETRACT BOLT.
- 8 POINT OF STATIC LOAD APPLIED - 203 LB. MAX. / .90 KN MAX. (PANIC AND SLAM LOAD)
- 9 POINT OF STATIC LOAD APPLIED - 102 LBS. MAX. / .45 KN MAX. (JAMMING LOAD).
10. OPERATING LOAD IS 5.5 LBS. MAX. / 2.5 KG MAX.



UPPER DIM. IN INCHES  
LOWER DIM. IN MM

	-402	LATCH ASSY	(OPPOSITE)		
	-401	LATCH ASSY	(SHOWN)		
QTY REQD	PART NO.	DESCRIPTION	MATERIAL	SIZE SPECIFICATION	ITEM NO.
PARTS LIST					
UNLESS OTHERWISE SPECIFIED: DIMENSIONS IN INCHES		DRAWN BY	T. CSIK	8-11-93	SKYLOCK INDUSTRIES INCORPORATED MONROVIA CALIFORNIA U. S. A.
TOLERANCES ON DRILLED HOLES AND 10387		CHECKED	S. C.	1-94	
DECIMALS .XX ± .010 .XXX ± .010		ENGINEER	T. CSIK	1-94	
DIMENSIONS IN MILLIMETERS		PROJECT	T. SOUZA	1-94	
TOLERANCES ON DRILLED HOLES AND 10387		APPROVAL	T. CSIK	1-94	INDICATOR LATCH ASSY
DECIMALS .XX ± .010 .XXX ± .010		APPROVAL	R. HECK	1-94	
DO NOT SCALE THIS DRAWING		USED ON		SIZE	CODE IDENT. NO.
NEXT ASSY				C	51941
(THIS PART IS SIMILAR TO 20253)			DRAWING NO.	20848	REV. B
			SCALE	1:2	WT. .25 KG / .60 LB.
			SHEET	1	OF 1